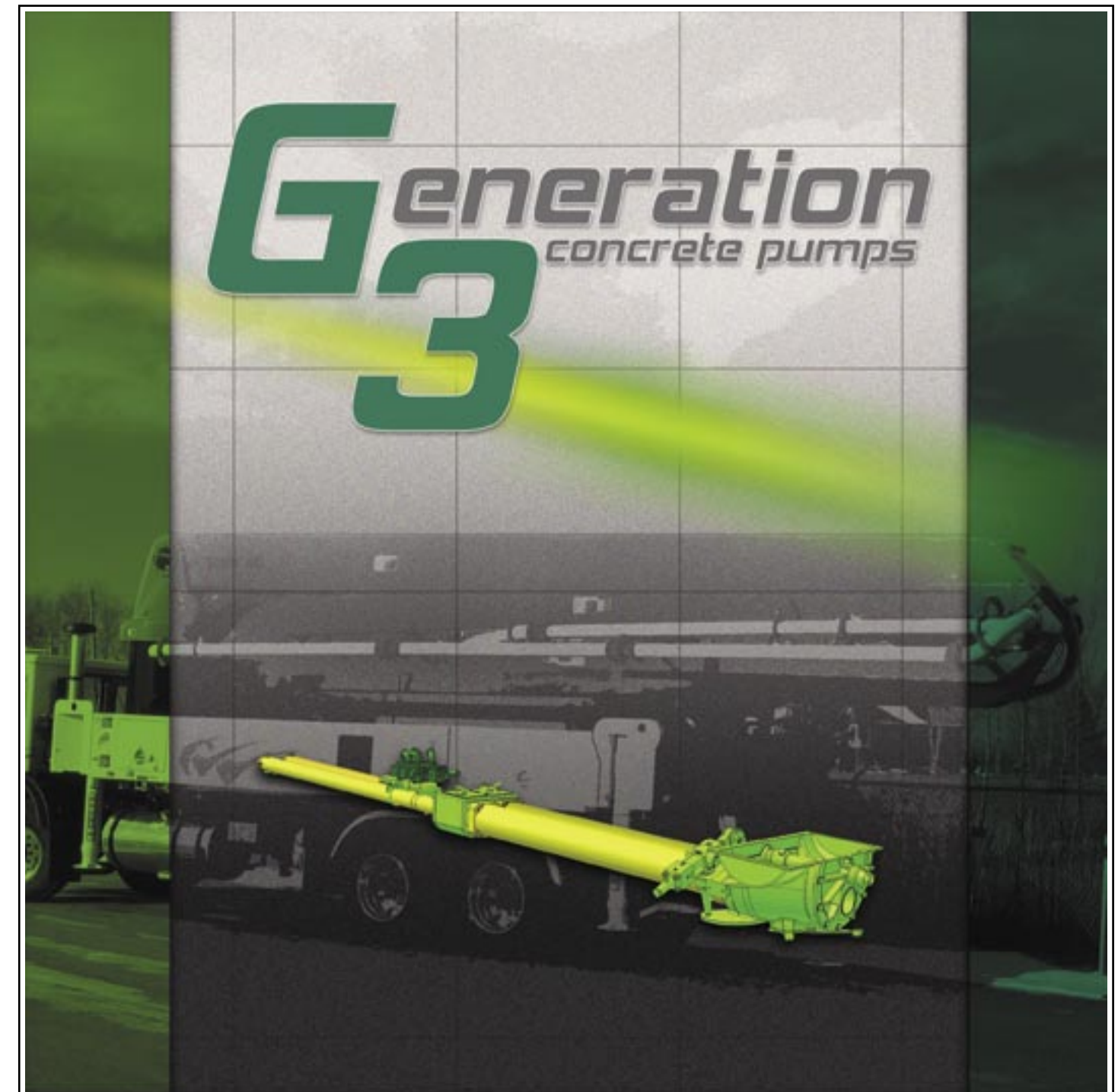


Pump Models	2023-4	2023-5	2023H-6	2525H-5	2525H-6
Pump Cylinder Diameter (in - mm)	9 230	9 230	9 230	10 250	10 250
Pump Cylinder Stroke Length (in - mm)	79 2000	79 2000	79 2000	98 2500	98 2500
Differential Cylinder Size (in - mm)	5.1 130	5.1 130	4.7 120	4.7 120	4.7 120
Max. Hydraulic Pressure (psi - bar)	5075 350	5075 350	4495 310	5075 350	5075 350
Max. Strokes Per Minute	26	32	28	18	22

	2023-4	2023-5	2023H-6	2525H-5	2525H-6
CU. YARDS / HOUR CU. METERS / HOUR	170 130	209 160	182 140	173 132	213 163
Concrete Output					
PSI BAR	1007 69	1007 69	1233 85	1169 81	1169 81
Pressure on Concrete					
	2023-4	2023-5	2023H-6	2525H-5	2525H-6

Pump Kits



Generation 3 concrete pumps

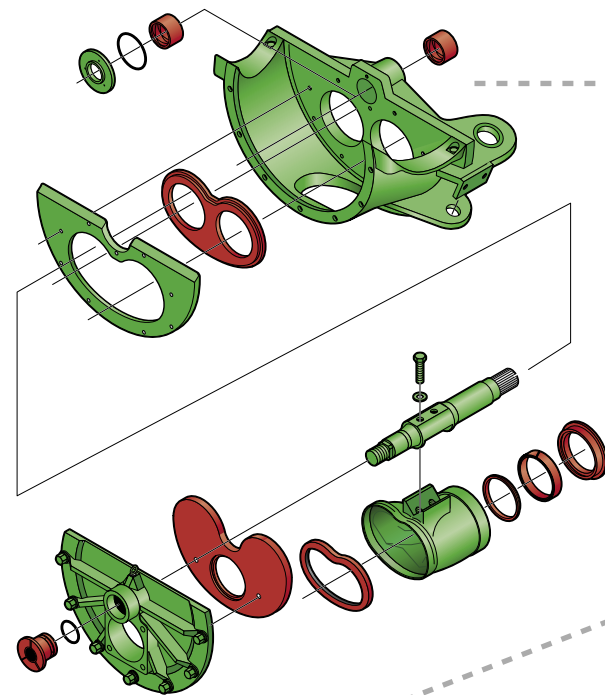
Here is the concrete pump that sets the standard for reliability and performance. The Generation 3 outperforms every other concrete pump on high-visibility projects while also placing millions of yards of concrete on everyday pours. Engineering refinements, thoroughly tested at our 400,000 square foot plant, bring increased smoothness, lower noise levels, cooler running, longer life, higher volume and profits. A wide range of models share the simple, all-hydraulic design that pioneered the concrete pumping revolution. Look no further – Schwing engineers your success with

- Open circuit all-hydraulic design providing continuous filtration and cooling for long hydraulic pump life.
- All-hydraulic shifting and manual override to guarantee job completion.
- Continuous High-Flow design that equals high-performance.

Field Tested Toughness Meets Low Cost of Ownership

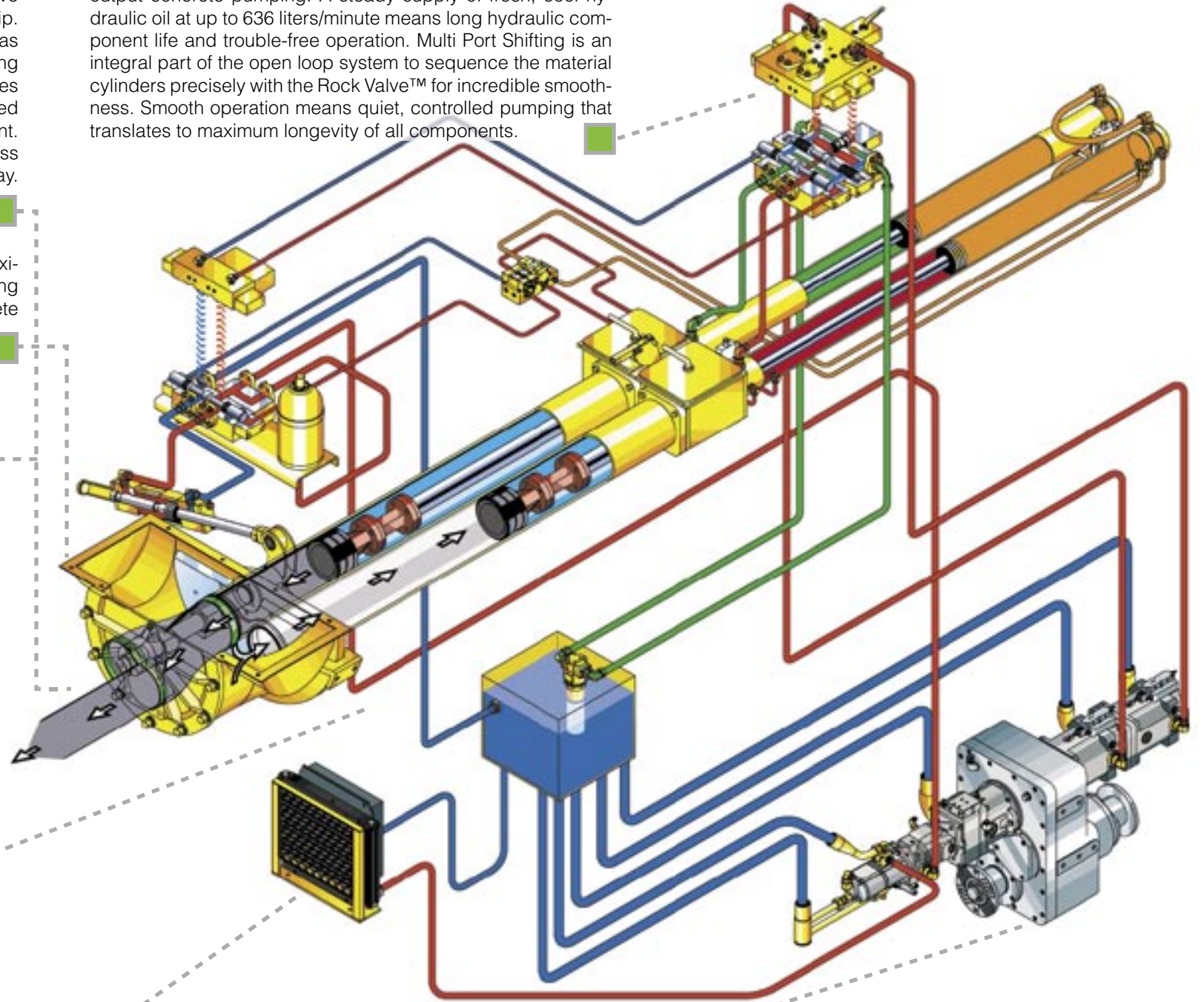
Legendary Rock Valve™ equalizes forces within the housing to reduce wear and provide smooth switching and feeding of the twin concrete pumping cylinders even with harsh mixes. And because it is the only completely rebuildable sequencing valve available, owners enjoy the lowest cost per yard of ownership. The Rock Valve™ is easily accessed and has about half as many parts as other valve types with replacement parts costing one-third of other sequencing valves. This further contributes to ease of servicing, low maintenance costs, increased pump availability and a faster return on your investment. On the job, the Rock Valve™ cleans up quicker with less water for faster turnaround and more jobs pumped per day.

Choose the Big Rock™ with larger valve and housing for maximum feeding efficiency to complement our large, slow-stroking material cylinders. The valve is designed for better concrete flow with less wear to smooth out shifting and the boom.



Material cylinders are now available with up to 10-inch (250mm) diameter and 98-inch (2500mm) stroke length. This long slow, stroking design keeps up with the highest output demands. These hardened material cylinders can be switched end-to-end and rotated to extend wear life. Precise alignment during assembly further contributes to maximum longevity.

Re-engineered G3 High Flow Control block is the brain for the all-hydraulic system. The new design flows more oil through larger diameter ports to meet the demands of continuous, high output concrete pumping. A steady supply of fresh, cool hydraulic oil at up to 636 liters/minute means long hydraulic component life and trouble-free operation. Multi Port Shifting is an integral part of the open loop system to sequence the material cylinders precisely with the Rock Valve™ for incredible smoothness. Smooth operation means quiet, controlled pumping that translates to maximum longevity of all components.



Proper cooling of the hydraulic oil is so important to continuous operation under demanding conditions. That's why the Schwing Generation 3 design employs a suction pump oil cooler that continuously draws hydraulic oil from the tank and circulates it through the filters and a high efficiency cooler. Even when the concrete pump is not engaged, this separate hydraulic oil circuit continues to operate for protection and performance.

High volume hydraulic pumps are sized for your pumping requirements. New piggyback design and gearbox accept higher torque input for high performance output. Schwing's long experience in designing hydraulic pumping systems assures you of the right hydraulic pump to meet your long-term goals.